

K-9 MEDICAL SIMULATOR

Learn more about this and other Products with a Mission® at www.NARescue.com



Realistic limb movement and expanded joint range of motion!

The K-9 Medical Simulator is designed for classroom integration, trauma lanes and field training scenarios. Multiple appendage options present a variety of wounds including gunshot, blast and burns to provide full mission profiles in combat scenarios, disaster re-creations and mass casualty events.

This K-9 Simulator is developed, and manufactured, by North American Rescue Simulation (NARS) and enhances Tactical Combat Casualty Care (TCCC) instruction from Point of Injury to transfer of higher care. This all-in-one system allows instructors to build multiple realistic traumatic casualty scenarios with reactive patients. A 1-year warranty is included with each simulator.

Includes wearable fur vest with multiple hook & loop injury attachment sites. Wounds include small caliber GSW entry and exit wounds, large caliber GSW entry and exit wounds, impaled object, packable laceration, massive soft tissue facial injury (muzzle-style wearable wound), fur patches to cover hook and loop attachment sites. Injuries and fur vest hand washable.

FEATURES/SPECIFICATIONS

- Realistically depicts a Belgian Malinois working dog. It has the look and feel of a real dog with realistic limb movement and expanded joint range of motion
- Welded steel skeleton, with solid metal joints
- Life-like airway allows for manual manipulation; accepts 10mm ET tubes
- IV training sites with flash feedback to show successful procedure
- 4 intraosseous sites: 2 @ greater tubercle of the humerus and 2 @ the tibial head
- 1L onboard blood reservoir
- Bleeding wounds facilitate various bleeding control methods
- Five interchangeable limbs with different injuries – complete amputation, open fracture, soft tissue injuries, road rash/burns, penetrating injury
- Tracheostomy simulator featuring shaveable fur with multi-layered tissue insert
- Bilateral Needle decompression/ thoracocentesis site allow release of air
- CPR chest
- Adjustable pulse – features variable rate, frequency, and pulse pressure
- Customized wireless remote control via NARS tablet; included with purchase
- Remote independent lung control and breathing rate
- Durable fur makes allows easy care and maintenance; it can be hand washed and brushed. Also has shaveable replacement fur for IV sites
- Rugged exterior for use in all training locations and situations
- Operated by a single onboard rechargeable NiMH battery. Battery charger included
- Rugged 3-wheeled deployment bag for storage and transport included (42" x 20" x 15")
- K9 weighs approximately 60lbs
- Total package weight 100 pounds
- Hand-assembled in LaGrange, KY by US Veterans
- Includes 3-year manufacturer warranty from date of delivery

K-9 MEDICAL SIMULATOR

ITEM #	NSN
93-0027	6910-01-706-0307

* Explore other simulators at www.NARescue.com

DIMENSIONS

- K-9 Simulator Weight: 60 lbs
- Packaged Weight: 100 lbs



NORTH AMERICAN RESCUE®
www.NARescue.com • 888.689.6277

K-9 MEDICAL SIMULATOR

INTERVENTIONS SUPPORTED:

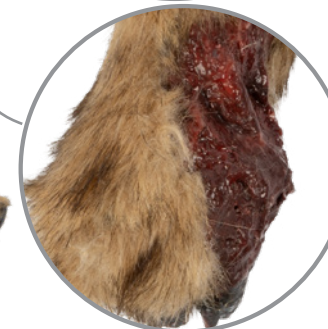
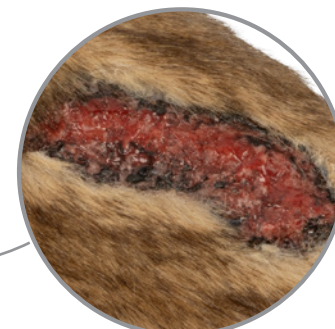
- Hemorrhage control
- Chest seal application
- Advanced airway management
- CPR chest compressions
- Bilateral needle decompression
- GVD needle decompression
- Hyperthermia
- IV/IO

ENVIRONMENT SPECS:

- Operating: -20°C to 60°C (-4°F to 140°F) MIL-STD-810G, Method 501.5 Procedure II
- Storage: -40°C to 70°C (-40°F to 158°F) MIL-STD-810G, Method 501.5/502.5 Procedure I
- Drop / Shock: 26 drops from 1.2 m (4 ft) MIL-STD-810G, Method 516.6 Procedure IV
- Vibration: MIL-STD-810G, Method 514.6 Procedures I, II
- Sand / Dust: IP65, IEC 60529
- Water: IP65, IEC 60529
- Humidity: 0 ~ 95% (non-condensing) MIL-STD-810G, Method 507.5
- Altitude: 4572 m (15,000 ft) MIL-STD-810G, Method 500.5 Procedure I

NARS HANDHELD TABLET SPECS:

- Dimensions: L 8.8 in. x W 5.7 in. x D 0.9 in.
- Weight: 2.18 lbs
- Processor: Intel® Pentium® N3710 1.60 GHz (2.56 GHz boost) 64-bit quad-core
- 8" capacitive multi-touch 1280x800 pixels
- Sunlight readable, 600 nits Glove/rain mode
- Chemically strengthened glass
- Battery: 7.6V 5200 mAh (39.52 Wh) Hot-swappable



K-9 MEDICAL SIMULATOR

ITEM #	NSN
93-0027	6910-01-706-0307

Learn more about this and other Products with a Mission® at www.NARescue.com



NORTH AMERICAN RESCUE®
www.NARescue.com • 888.689.6277