

BURN TORSO SIMULATOR *ADHESIVE - LARGE*

REV110723

Supports Active Bleeding Simulation with Live Actors

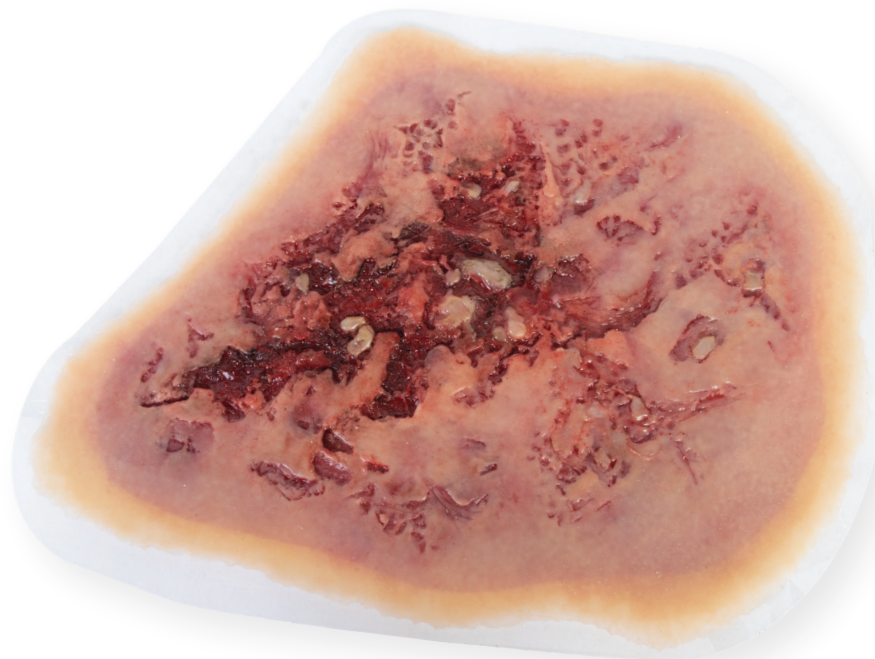
The Large Burn Torso Simulator Adhesive features first, second, and third degree burns. The adhesive burn measures 10 in. x 14.5 in. area. This moulage represents an approximate five percent total body surface area (TBSA). Molded from rugged materials that feature realistic injury deformities and are reusable and washable.

Specifications:

- Features first, second, and third degree burn areas.
- Represents an approximate 5% total body surface area (TBSA)
- Washable and reusable

Dimensions:

- Packaged: L 6 in. x W 6 in. x H 6 in.
- Weight: 2 lbs.



Burn Torse Simulator Adhesive - Lg

ITEM #	NSN #
93-0396	----



NORTH AMERICAN RESCUE®
www.NARescue.com • 888.689.6277

PRODUCTS
WITH A **MISSION®**