

TOMMANIKIN® RIGHT LEG *with Gunshot Wound*

REV072722

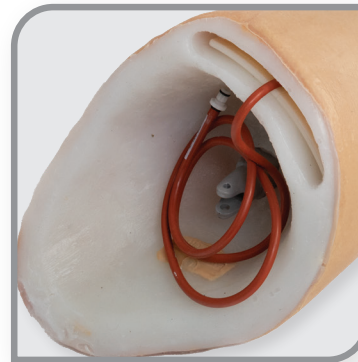
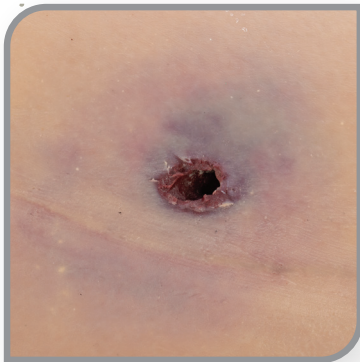
The TOMManikin® right leg with gunshot wound is tourniquet responsive and provides realistic feedback in training scenarios. Features through-and-through lateral entry wound with large medial exit wound. The 100% silicone construction with metal bone makes this training leg interchangeable with all TOMManikins® TAMikins. Utilizing the onboard TOMManikin® bleeding system users can train on effective techniques to stop active bleeds.

Specifications:

- Features through-and-through lateral entry with medial exit wound
- Tourniquet Responsive
- Compatible with all TOMManikin® and TAMikin
- Wound can be used as an impaled object with a piece of wood or steel
- Available in Light Tone or Deep Tone skin

Dimensions:

- Dimensions: L 36 in. x W 18 in. x D 18 in.
- Weight: 28 lbs



***TOMMANIKIN® Right Leg
with Gunshot Wound***

ITEM #	NSN #
93-0097	----



NORTH AMERICAN RESCUE®
www.NARescue.com • 888.689.6277

PRODUCTS
WITH A
MISSION®